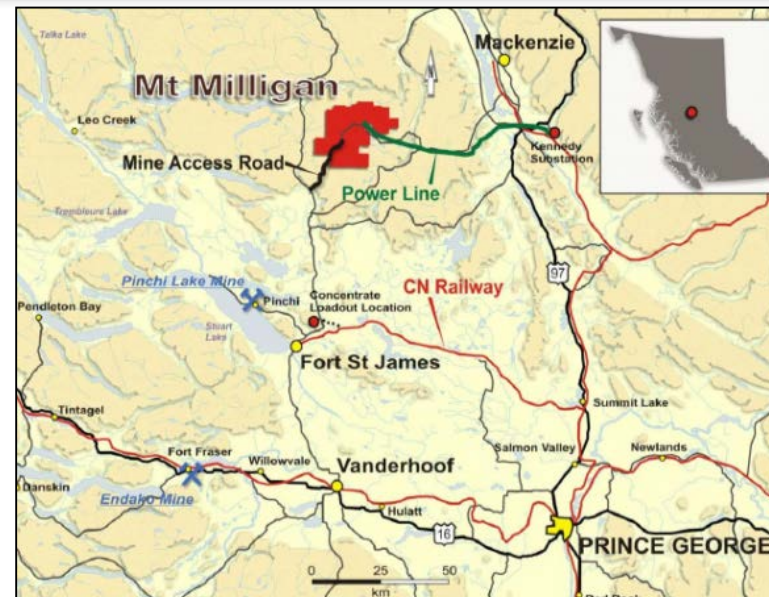
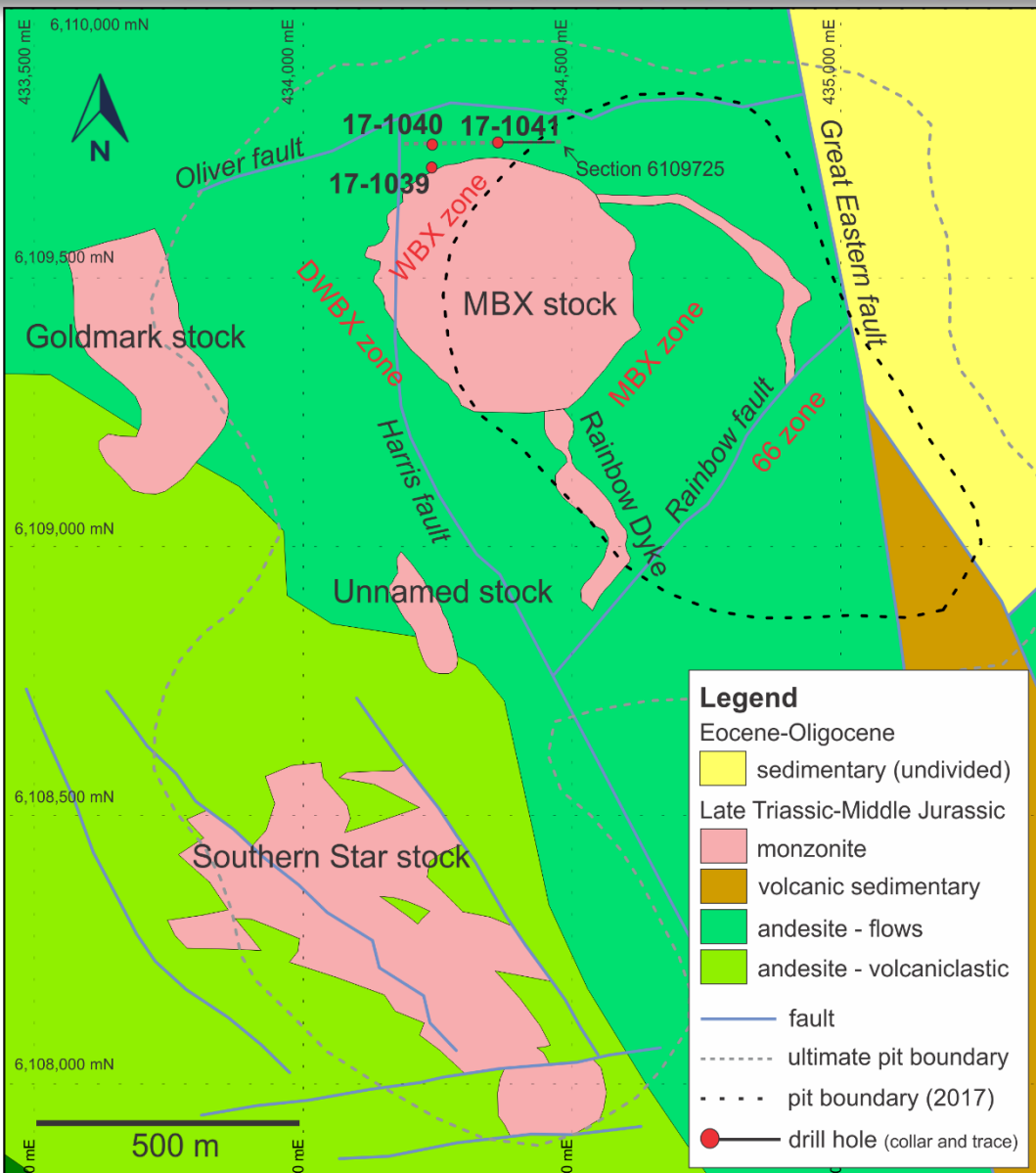
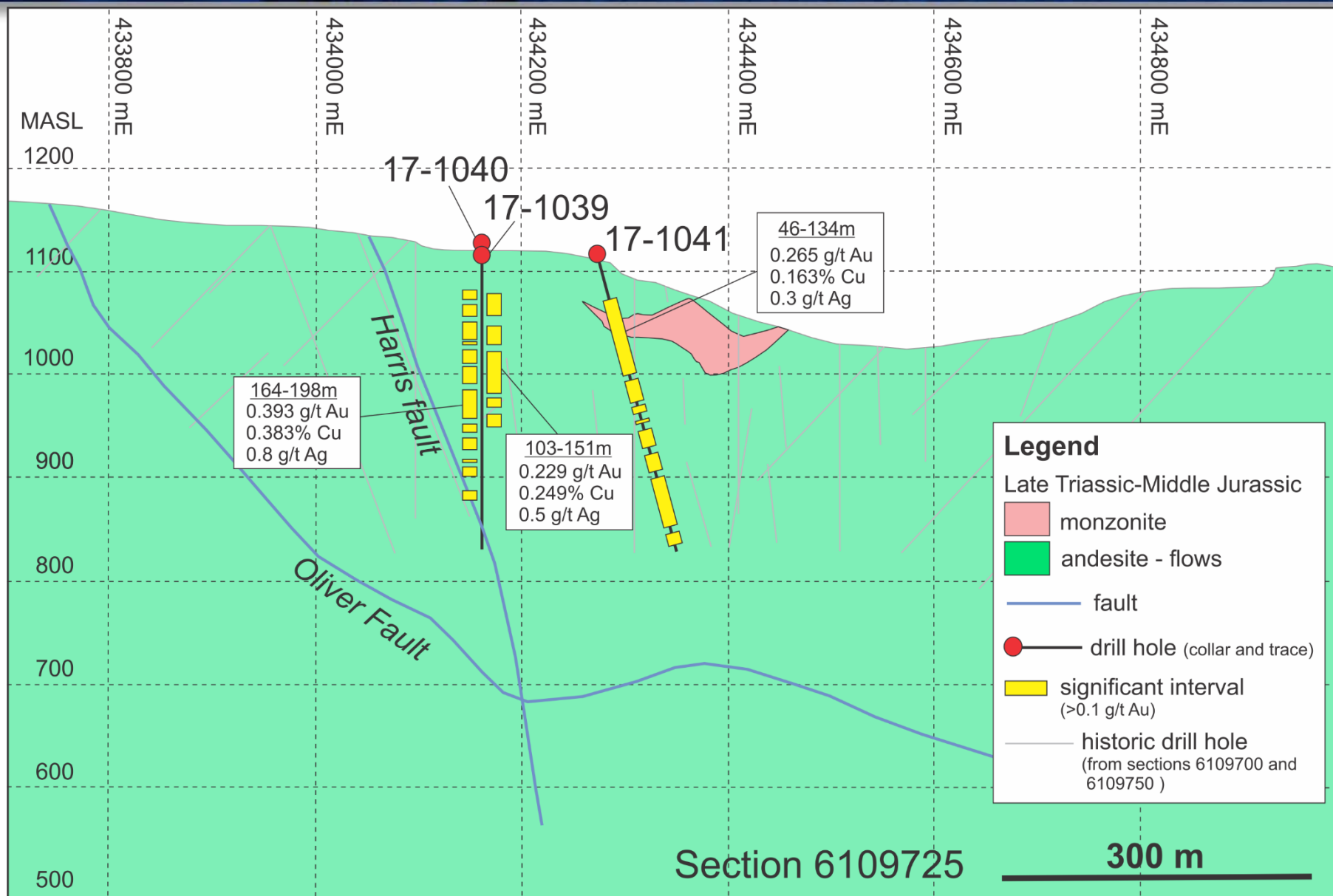


Mt. Milligan Project, Drill Hole Plan Map



Location of Mount Milligan Mine

Mt. Milligan Project, Section 6109725





Centerra Gold Inc. - Mount Milligan 2017 Near Pit Program

Drill Results

Period July 1st, 2017 to September 30th, 2017

Drill Hole	Location	Purpose	From (m)	To (m)	Core Length (m)	Au (g/t)	Cu (%)	Ag (g/t)
17-1040	WBX zone	Section 6109750 infill low density area 1050m-850m also intersecting Harris fault	45.30	52.00	6.70	0.302	0.316	0.6
			62.23	75.95	13.72	0.117	0.118	0.2
			82.00	102.60	20.60	0.299	0.255	0.5
			<i>includes</i> 82.00	82.90	0.90	1.213	1.180	2.4
			<i>and</i> 102.00	102.60	0.60	2.438	0.501	1.2
			107.20	108.00	0.80	0.114	0.176	0.5
			117.10	130.00	12.90	0.213	0.260	0.7
			136.25	156.60	20.35	0.253	0.240	0.9
			164.00	198.00	34.00	0.393	0.383	0.8
			<i>includes</i> 173.90	175.87	1.97	1.091	0.851	2.0
			207.65	212.85	5.20	0.550	0.239	11.8
			221.39	232.82	11.43	0.647	0.556	9.3
			<i>includes</i> 224.63	228.00	3.37	1.238	0.422	16.8
			247.70	250.00	2.30	0.176	0.332	1.6
			257.54	264.90	7.36	0.320	0.076	0.8
			284.00	304.00	20.00	0.199	0.007	0.4
17-1039	WBX zone	Section 6109700 infill low density drilling inferred area 1100m-900m	37.49	52.00	24.51	0.160	0.158	0.2
			72.00	95.90	23.90	0.174	0.192	0.4
			103.00	151.00	48.00	0.229	0.249	0.5
			157.81	164.38	6.57	0.163	0.251	0.5
			177.00	189.65	12.65	0.199	0.287	0.7
17-1041	WBX zone	Section 6109750 MBX infill low density area	<i>includes</i> 46.00	134.00	88.00	0.265	0.163	0.3
			99.24	101.00	1.76	2.596	0.144	0.5
			141.00	170.00	29.00	0.687	0.106	5.2
			<i>includes</i> 147.18	150.57	3.39	4.981	0.156	36.9
			178.20	184.57	6.37	0.379	0.312	1.0
			196.00	198.00	2.00	0.281	0.144	0.5
			206.75	228.66	21.91	0.794	0.091	20.2
			<i>includes</i> 225.35	228.66	3.31	4.075	0.309	121.2
			237.32	259.00	21.56	0.950	0.042	8.4
			<i>includes</i> 240.00	241.00	1.00	15.400	0.240	168.8
			264.00	326.50	62.50	0.214	0.120	0.5
			334.37	348.00	13.63	0.148	0.053	0.5

Notes: Assays are reported true values without top cutting.

Reported intervals are greater than 0.1 g/t Au and included maximum internal waste of 4.0 m where it existed.

This information should be read together with our news release of October 31, 2017.

C. Paul Jago, a Member of Engineers and Geoscientists British Columbia, is Centerra's qualified person for the purpose of National Instrument 43-101.

Tables are current as of September 30th, 2017.



Centerra Gold Inc. - Mount Milligan 2017 Near Pit Program

Diamond Drill Hole Locations

Period July 1st, 2017 to September 30th, 2017

Hole ID	Purpose	Location Easting	Location Northing	Elevation (m)	Length (m)	Collar Azimuth	Collar Dip
17-1039	Exploration	434161.50	6109698.21	1116.59	344.73	0	-90
17-1040	Exploration	434161.71	6109750.52	1125.22	313.64	0	-90
17-1041	Exploration	434268.90	6109763.05	1117.11	352.65	90	-75

Projection: UTM NAD83 Zone 10N

Notes: This information should be read together with our news release of October 31, 2017.

Azimuth: Relative to True North

C. Paul Jago, a Member of Engineers and Geoscientists British Columbia, is Centerra's qualified person for the purpose of National Instrument 43-101.

Tables are current as of September 30th, 2017.