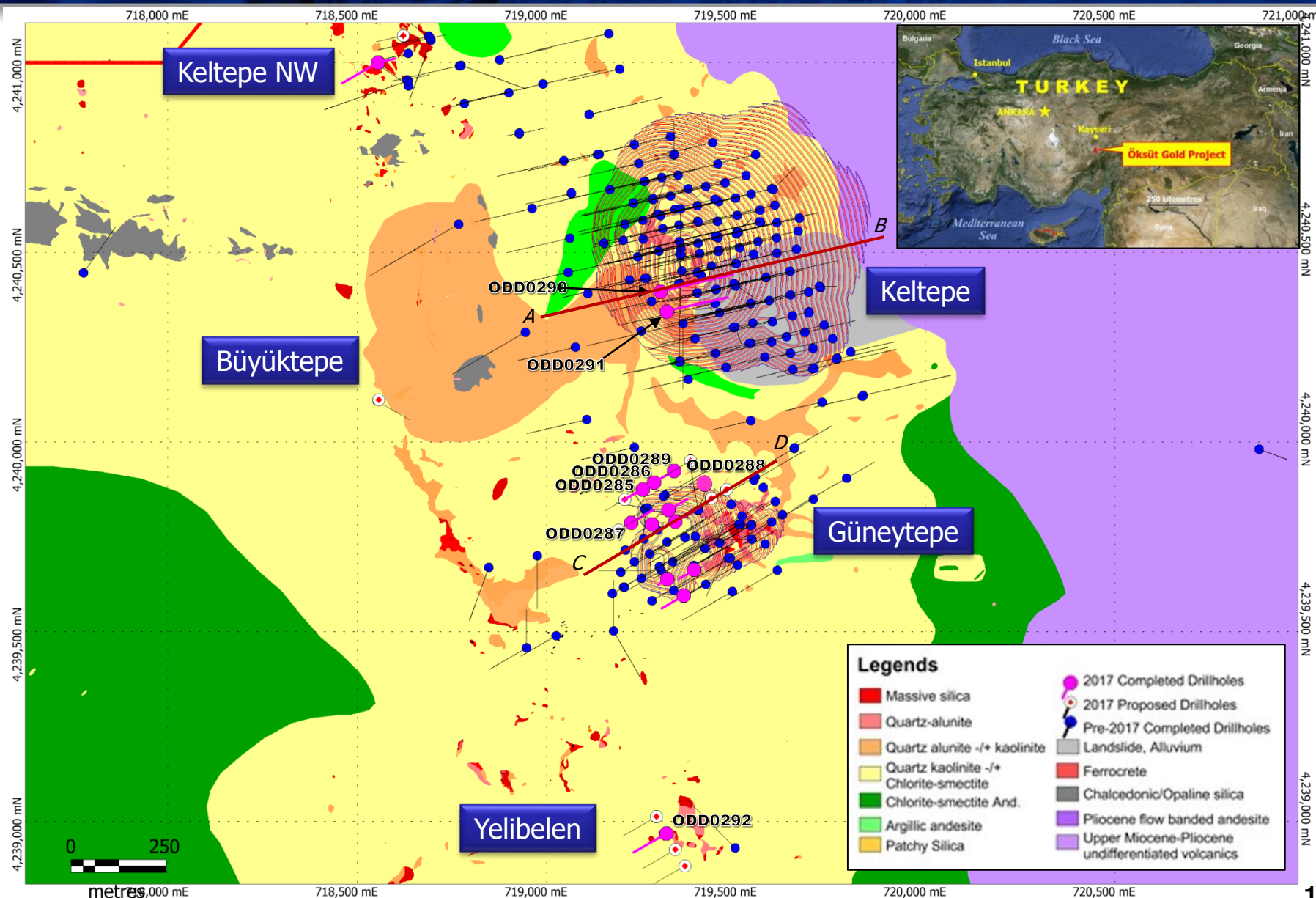


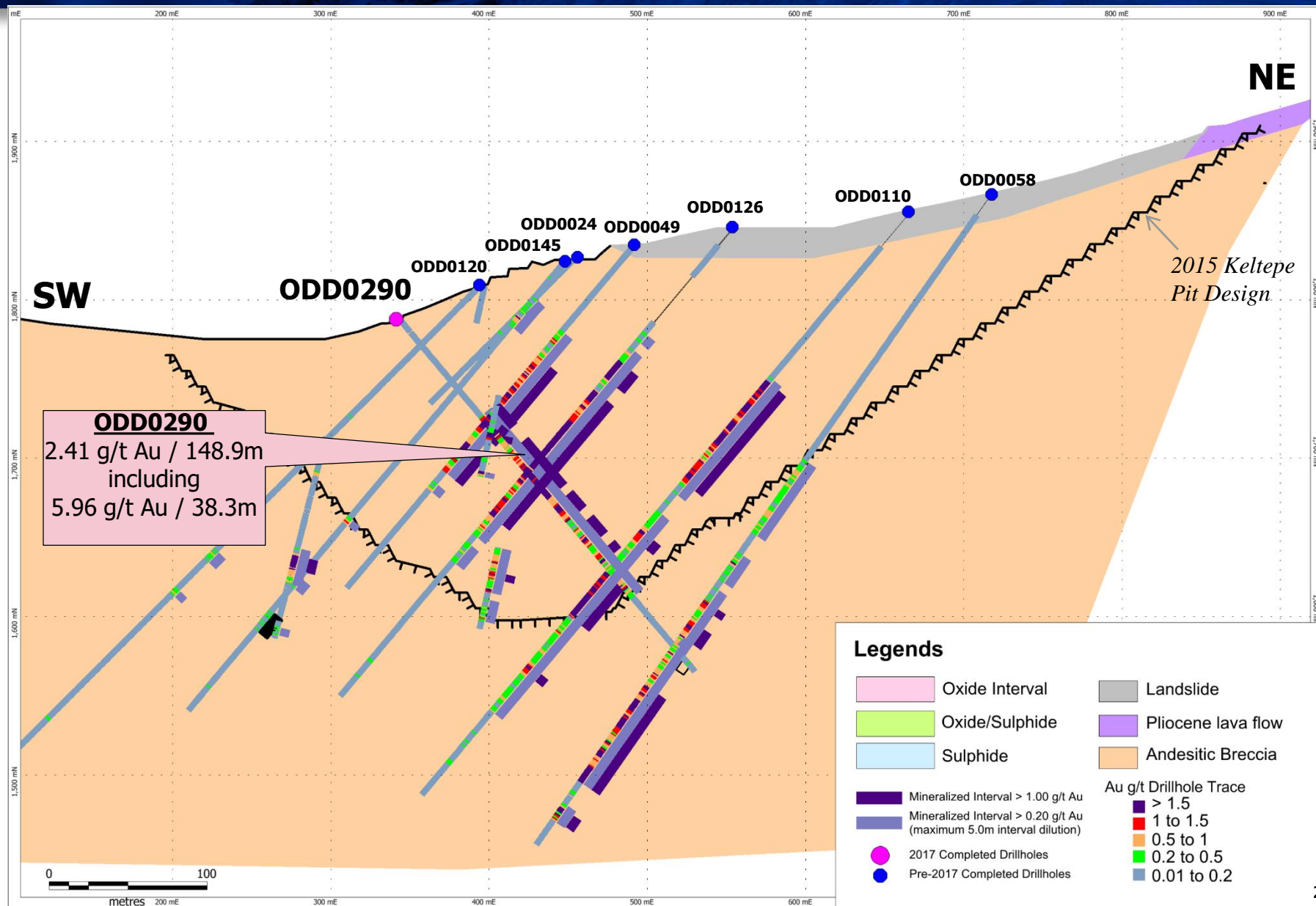


# Öksüt Gold Project – Drill Hole Plan Map

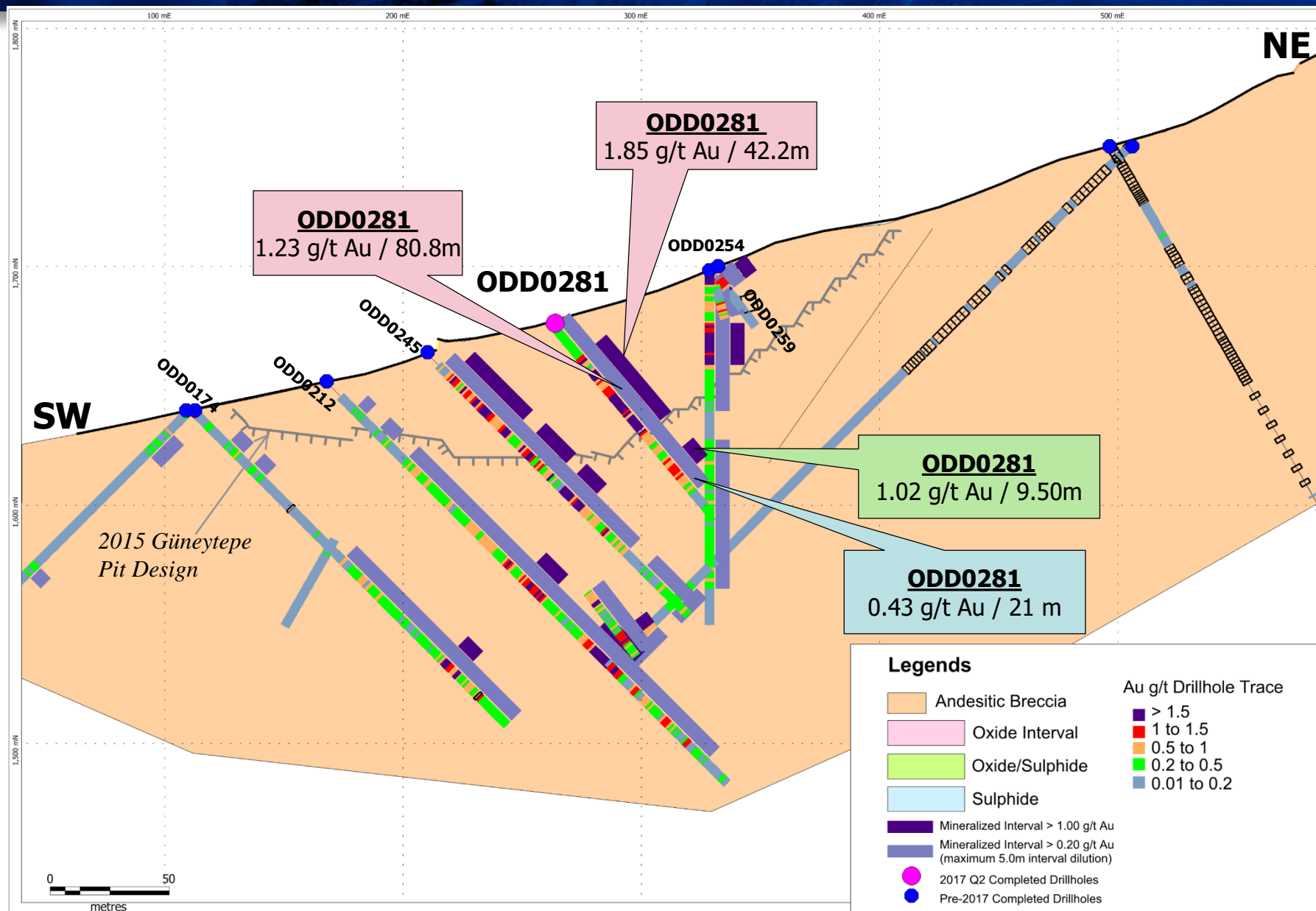




# Öksüt Gold Project – Keltepe Section AB



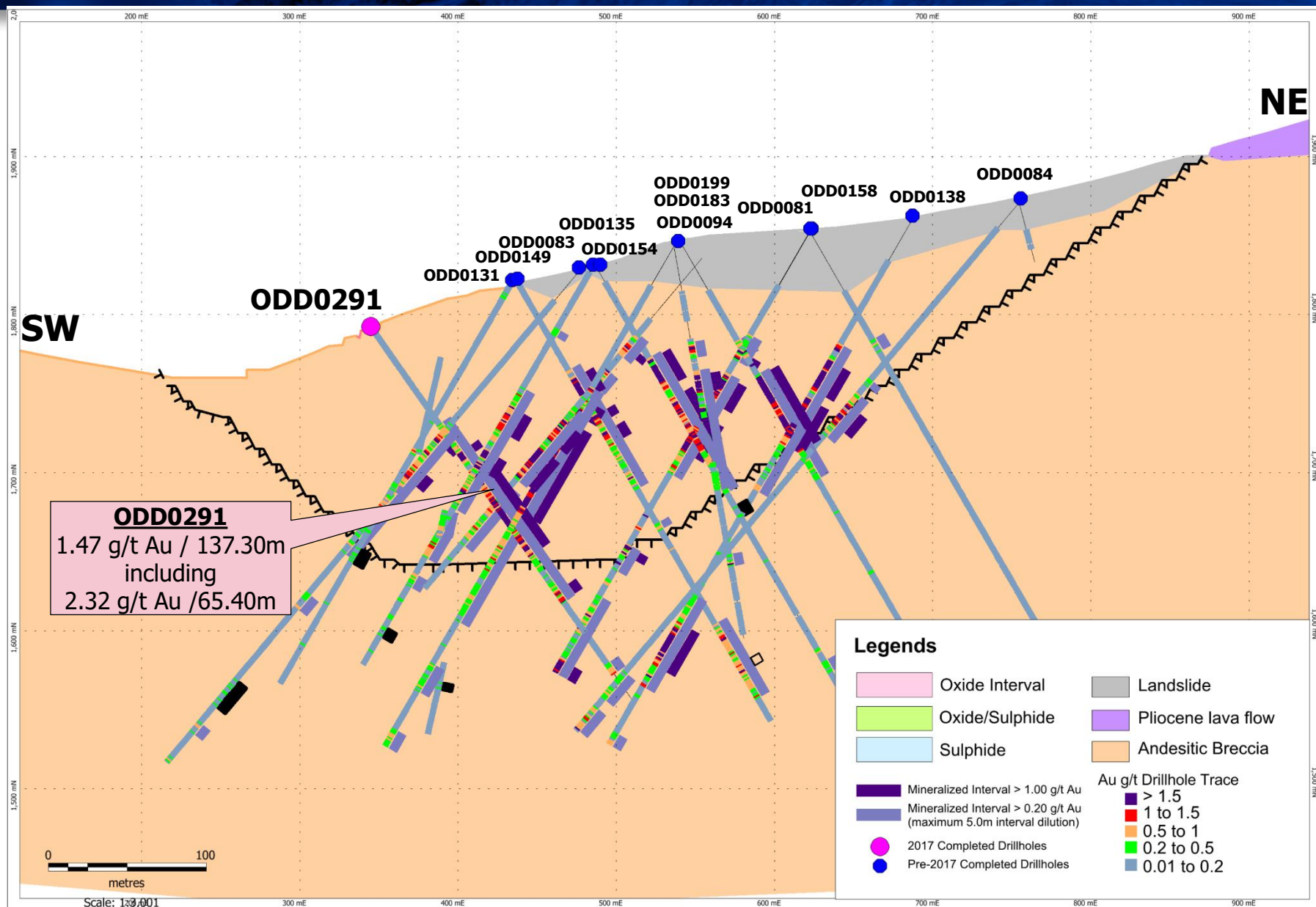
# Öksüt Gold Project – Güneytepe Section *CD*



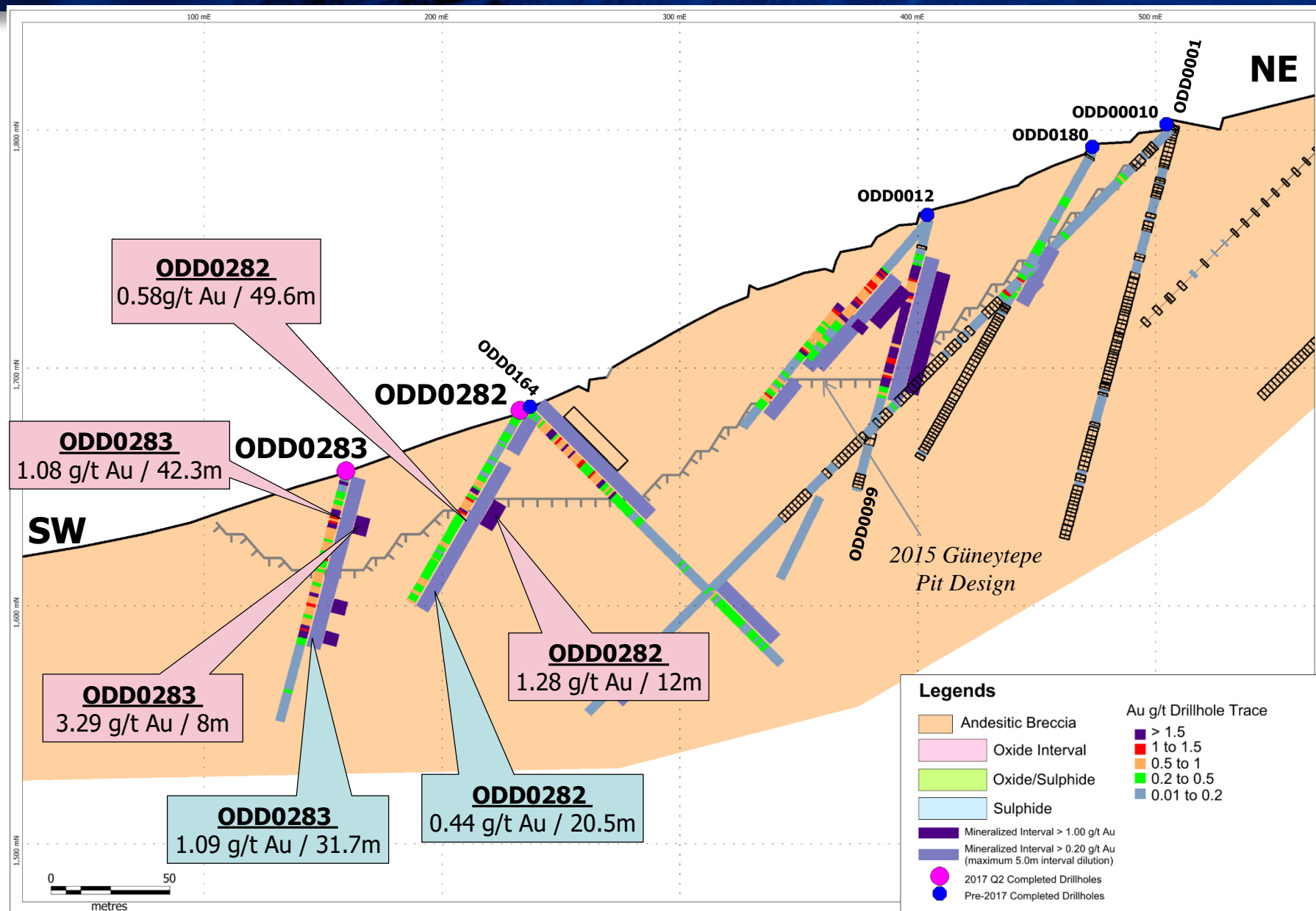




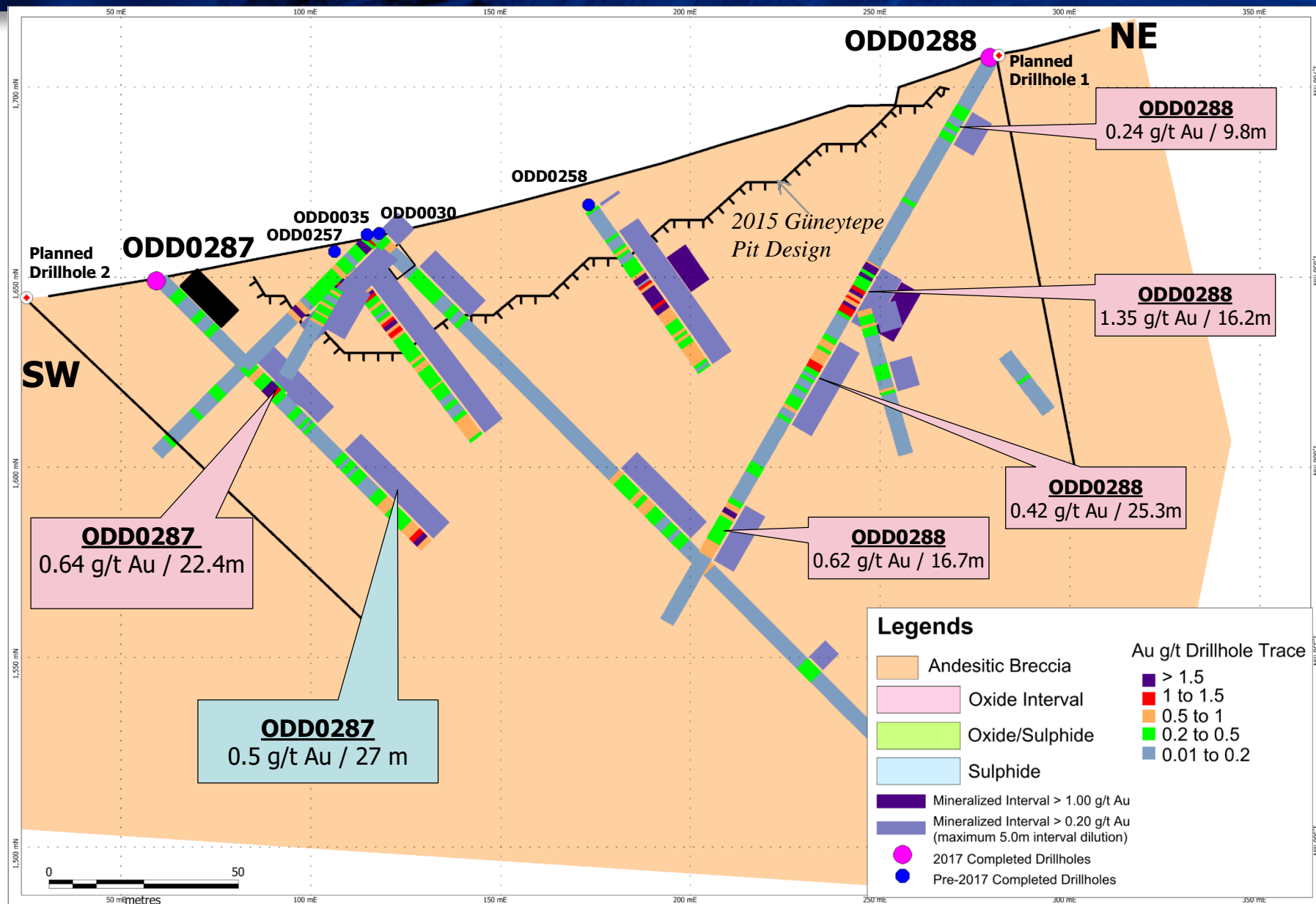
# Öksüt Gold Project – Keltepe Section *ODD0291*



# Öksüt Gold Project – Güneytepe Section ODD282-283



# Öksüt Gold Project – Güneytepe Section ODD287-288



## NE



This information should be read together with our news release of October 31, 2017.  
Mustafa Cihan, a Member of the Australian Institute of Geoscientists (AIG), is Centerra's qualified person for the purpose of National Instrument 43-101.



# Centerra Gold Inc. - Oksut Gold Project

## Drill Results

Period July 1st, 2017 to September 30th, 2017

Drill Hole	Target	From (m)	To (m)	Core Length (m)	Au (g/t)	Cu (%)	Oxidation
ODD0281	Güneytepe infill	0.0	80.8	80.8	1.23		oxide
		includes 17.0	59.2	42.2	1.85		oxide
		80.8	110.0	29.2	0.49		sulphide
ODD0282	Güneytepe infill	0.0	16.0	16.0	0.25		oxide
		21.9	71.5	49.6	0.58		oxide
		includes 37.0	49.0	12.0	1.28		oxide
		71.5	92.0	20.5	0.44		sulphide
ODD0283	Güneytepe infill	0.0	42.3	42.3	1.07		oxide
		includes 15.2	23.2	8.0	3.29		oxide
		42.3	74.0	31.7	1.10		sulphide
ODD0284	Güneytepe infill	72.5	83.7	11.2	0.35		oxide
		83.7	95.7	12.0	0.21		sulphide
ODD0285	Güneytepe step-out	5.0	15.9	10.9	0.29		oxide
		56.8	107.5	50.7	0.33		oxide
ODD0286	Güneytepe step-out	1.1	7.0	5.9	0.20		oxide
		44.0	53.6	9.6	0.27		oxide
		110.5	123.3	12.8	0.25		oxide
ODD0287	Güneytepe infill	5.0	20.0	15.0	0.19		oxide
		33.6	56.0	22.4	0.64		oxide
		66.0	71.0	5.0	0.22		oxide
		72.0	99.0	27.0	0.50		sulphide
ODD0288	Güneytepe infill	14.0	23.8	9.8	0.24		oxide
		61.5	77.7	16.2	1.35		oxide
		83.7	109.0	25.3	0.42		oxide
		133.5	150.2	16.7	0.62		oxide
ODD0289	Güneytepe step-out	1.0	7.8	6.8	0.91		oxide
		47.0	59.8	12.8	0.22		oxide
ODD0290	Keltepe infill	81.8	231.2	148.9	2.41		oxide
		includes 82.8	100.0	17.2	2.54		oxide
		includes 111.0	149.3	38.3	5.96		oxide
		includes 154.8	168.0	13.2	2.49		oxide
		includes 175.0	189.0	13.5	1.12		oxide
		includes 196.0	202.3	6.3	1.23		oxide
		240.0	251.3	13.3		1.69	oxide/sulphide
		includes 244.8	250.8	6.0		3.41	sulphide
ODD0291	Keltepe infill	271.6	278.0	6.4	0.28		sulphide
		71.6	209.4	137.3	1.47		oxide
		includes 93.7	99.2	5.5	2.48		oxide
		includes 107.2	173.1	65.4	2.32		oxide
		includes 201.0	208.7	7.7	1.28		oxide
		256.5	269.6	13.1	0.58		sulphide
ODD0292	Yelibelen Exploration	277.0	287.3	10.3	0.55		sulphide
		1.5	12.6	11.1	0.27		oxide

Notes: Mineralized intervals are greater than 0.20 g/t Au.

Higher grade sub-intervals are greater than 1.00 g/t Au.

Minimum 5m width and maximum of 5m internal dilution.

True widths for mineralized zones are about 60% to 90% of stated down hole interval.

Oxidation assignment is a visual discrimination from core logging.

This information should be read together with our news release of October 31, 2017.

Mustafa Cihan, a Member of the Australian Institute of Geoscientists (AIG), is Centerra's qualified person for the purpose of National Instrument 43-101.

Tables are current as of September 30th, 2017.





**Centerra Gold Inc. - Oksut Gold Project, Turkey**  
**Diamond Drill Hole Locations**  
Period July 1st, 2017 to September 30th, 2017

Drill Hole	Target	Location Easting	Location Northing	Elevation (m)	Length (m)	Collar Azimuth	Collar Dip
ODD0281	Güneytepe infill	719,340	4,239,791	1,675	110	60	-50
ODD0282	Güneytepe infill	719,389	4,239,663	1,681	92	240	-60
ODD0283	Güneytepe infill	719,319	4,239,639	1,655	107	240	-75
ODD0284	Güneytepe infill	719,362	4,239,596	1,658	136	240	-60
ODD0285	Güneytepe step-out	719253.496	4,239,876	1,668	125	240	-60
ODD0286	Güneytepe step-out	719,284	4,239,893	1,679	154	240	-60
ODD0287	Güneytepe infill	719,223	4,239,787	1,649	99	60	-45
ODD0288	Güneytepe infill	719,417	4,239,888	1,707	171	240	-60
ODD0289	Güneytepe step-out	719,334	4,239,923	1,700	98	240	-60
ODD0290	Keltepe infill	719,300	4,240,396	1,789	292	77	-50
ODD0291	Keltepe infill	719,317	4,240,344	1,789	287	77	-55
ODD0292	Yelibelen Exploration	719,316	4,238,969	1,832	188	240	-60

Notes: This information should be read together with our news release of October 31, 2017.

Mustafa Cihan, a Member of the Australian Institute of Geoscientists (AIG), is Centerra's qualified person for the purpose of National Instrument 43-101.  
Table is current as of September 31, 2017.

Projection: UTM ED50 Zone 36  
Azimuth: relative to True North